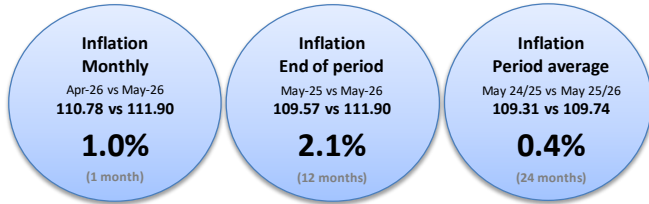


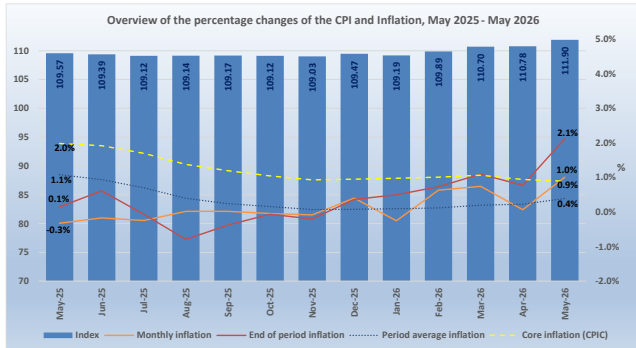
Consumer Price Index, base period June 2019

The Central Bureau of Statistics presents the main findings for the Consumer Price Index (CPI) for the month of May 2026



Consumer Price Index for the month of May 2026

The CPI for May 2026 (111.90) shows an increase of 1.0% compared to the index of April 2026 (110.78). The percentage change of the CPI over the last twelve (12) months (May 2025 to May 2026) is 2.1%, an increase of 2.0 percentage points (ppts) compared to the percentage change for the same period of last year (0.1%). The period average (last 24 months) percentage change of the CPI for the periods May 2024 to May 2025 and May 2025 to May 2026 is 0.4%, a decrease of 0.7 ppts compared to the period average percentage change over the periods May 2023 to May 2024 and May 2024 to May 2025 (1.1%).



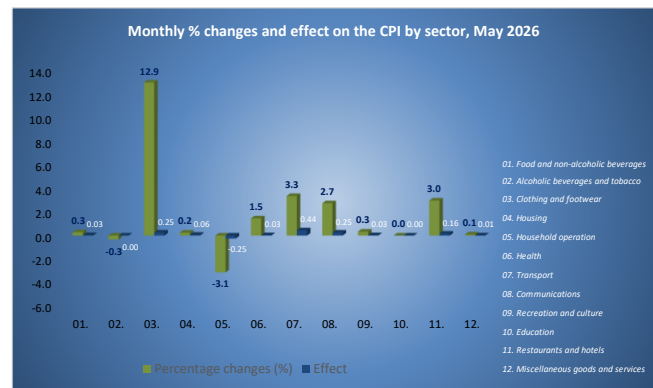
During this month, nine (9) of the twelve (12) sectors registered increases in prices. The increase that had the greatest influence on the CPI were registered for the "Transport" (3.3%), "Clothing and footwear" (12.9%) and "Communications" (2.7%) sectors, which contributed respectively to an effect of 0.44, 0.25 and 0.25 ppts. The increases in the remaining sectors had an effect of 0.32 ppts for the CPI of May 2026.

Aforementioned increases were partially offset mainly by a decrease in the index for the "Household operation" (-3.1%)

sector, which contributed with an effect of -0.25 ppts. The decrease in the remaining sector had an insignificant effect on the CPI of May 2026.

The increase in the "Transport" sector was mainly due to an increase of 4.2% in the category "Operation of personal transport equipment", which contributed to an effect of 0.35 ppts. The increase in the "Clothing and footwear" sector was mainly due to an increase in the category "Clothing" (13.6%), which contributed to an effect of 0.21 ppts. The increase in the "Communications" sector was due to an increase of 29.3% in the category "Telephone and telefax equipment", which contributed to an effect of 0.25 ppts.

The decrease in the "Household operation" sector was mainly due to decreases in the categories "Household appliances" (-7.1%) and "Tools and equipment for house and garden" (-8.7%), which contributed to an effect of respectively, -0.13 and -0.07 ppts.



Consumption basket

The consumption basket of the CPI consists of 408 goods and services. Compared to April 2026, 49.8% of these products had an increase in price, causing an effect of 1.65 ppts, while 32.6% showed a decrease, contributing to an effect of -0.64 ppts and the remaining 17.6% had no change in price. Compared to April 2026, the prices of goods (1.4%) and services (0.4%) show increases and contributed with an effect of respectively, 0.83 and 0.18 ppts on the CPI of May 2026.

CPI (BASE JUN 2019 = 100)		May-2026							CPI-C			SUBSISTENCE LEVEL		
Month	Year	Index	Avg. Index	Monthly	Year-to-date	End of period	Period average	Goods	Services	CPI-C	Energy	Food	1 adult	2 adults + 2 children
May	2026	111.90	↑ 109.74	↑ 1.0	↑ 2.2	↑ 2.1	↑ 0.4	↑ 1.4	↑ 0.4	↑ 0.9	↑ -2.3	↓ 1.2	↑ 2,686	↑ 5,641
April	2026	110.78	↑ 109.55	↑ 0.1	↑ 1.2	↑ 0.8	↑ 0.2	↑ 0.4	↑ -0.4	↑ 0.9	↑ -3.4	↓ 0.9	↑ 2,661	↓ 5,588
May	2025	109.57	109.31	-0.3	0.5	0.1	1.1	-0.7	0.2	2.0	-3.0	1.6	2,624	5,510

L.G. Smith Boulevard 160 | Oranjestad, Aruba | Tel: +297 5247433 | www.cbs.aw | 25 June 2026

- Figures have been rounded for clarity. Minor discrepancies may exist between individual values and their aggregated totals. These differences do not affect the overall accuracy or integrity of the data.
- Certain product groups are subject to frequent changes in models, quality, or specifications, which limits strict item-to-item price comparability over time. Product replacement is therefore applied in line with internationally accepted CPI methodology to maintain representativity and relevance. For a more detailed explanation, reference is made to the ACPI Methodology Statement on our website (www.cbs.aw).

Core inflation

The CPIC (core inflation) - CPI excluding the effect of energy and food – was 0.9% in May 2026. The energy index - which consists of the products: electricity, water, gasoline and diesel – was -2.3%. The food index showed an increase of 1.2%.

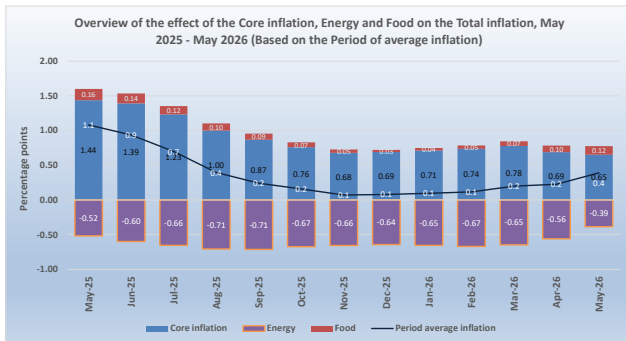
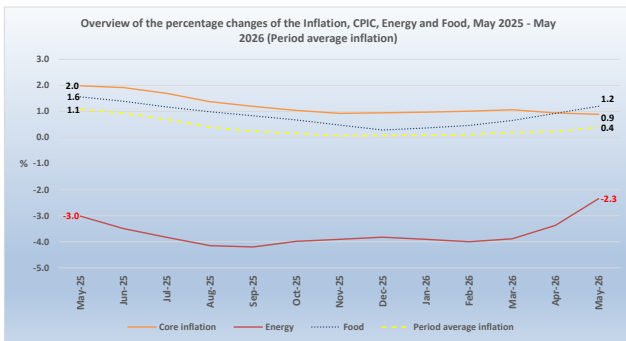
What is CPIC?

The CPIC (core inflation) is a portion of the inflation where certain items, which have volatile price movements, are excluded, such as food products and energy. When calculating the core inflation, the most volatile components are eliminated from the inflation. The core inflation index is used to assess the medium and long-term trends of the general level of prices. For purposes of economic policymaking, especially monetary policy, many economists focus on the proportion of the core inflation, as this allows a more in-depth evaluation of the recent inflation developments in the economy.

The CPIC is calculated by comparing the average index for the most recent 12-month period compared with the preceding 12-month period (Period average).

The three main uses of a CPI are:

1. a calculation method to compensate employees due to the loss of purchasing power, adjusting their salaries, with the percentage change rate of the CPI, which is known as indexation.
2. a tool used in National Accounts to adjust components of the gross domestic product (GDP) from nominal terms to real terms. (For example, by eliminating the effect of the price changes from the consumption value)
3. a means commonly used by governments and central banks to set inflation targets.



Subsistence level

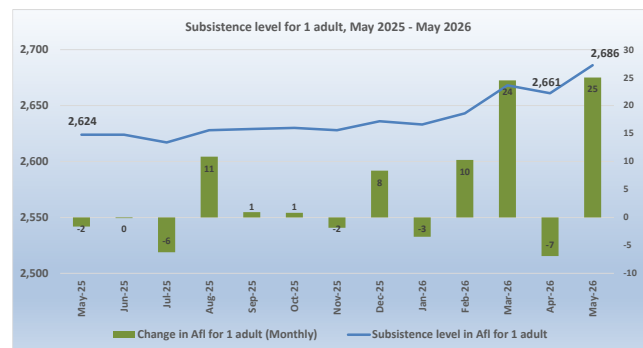
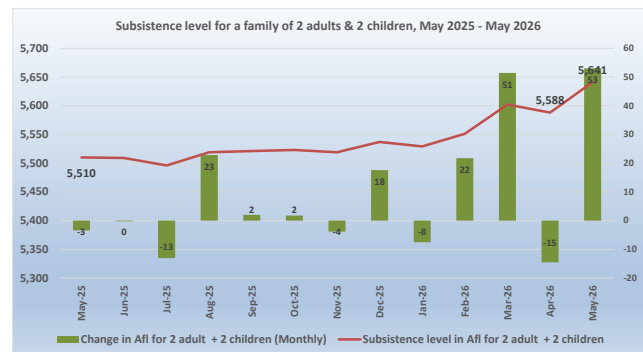
The subsistence level for a household consisting of two (2) adults and two (2) children (aged 0-14) in May 2026 is Afl. 5,641, an increase of Afl. 53 compared to April 2026 (Afl. 5,588). The subsistence level for a single adult household is Afl. 2,686, an increase of Afl. 25 compared to April 2026 (Afl. 2,661).

What is the Subsistence level and how is it adjusted?

The CBS defines the subsistence level as the minimum level of income that is perceived as necessary for a person or family to be able to function in the society in an adequate and socially acceptable manner. When the definition of subsistence level is used, it refers in reality to a "Social subsistence level" and not the literal definition "the money needed to purchase those goods and services deemed necessary for living a life free of basic deprivation" (United Nations).

A subsistence level index was created by calculating the cost of the essential resources that an average adult consumes during a month. Each month this index is adjusted, based on the prices of food, clothing, shelter, transportation, and other items in the basket.

The current subsistence level is based on the "Subsistence level 2010" report published by the CBS in December 2010, and is updated monthly according to the CPI. The reference unit used in this report is of a household consisting of two adults and two children (aged 0-14). The total weight of such a household is 2.1 (1.0 + 0.5 + 0.3 + 0.3).



L.G. Smith Boulevard 160 | Oranjestad, Aruba | Tel: +297 5247433 | www.cbs.aw | 25 June 2026

- Figures have been rounded for clarity. Minor discrepancies may exist between individual values and their aggregated totals. These differences do not affect the overall accuracy or integrity of the data.
- Certain product groups are subject to frequent changes in models, quality, or specifications, which limits strict item-to-item price comparability over time. Product replacement is therefore applied in line with internationally accepted CPI methodology to maintain representativity and relevance. For a more detailed explanation, reference is made to the ACPI Methodology Statement on our website (www.cbs.aw).

The subsistence level in May 2026

The subsistence level is the minimum level of income which is perceived necessary to achieve an adequate standard of living in a given country. The subsistence level is usually determined by estimating the cost of all the essential resources that an average adult consumes in one month or year. This is commonly called a basic needs index, and varies according to the price of food, clothing, housing, transport and other items in the "basket". Equivalent scales are used to adjust the assumed standard of living, of households of different sizes and composition. The scale assigns a weight of 1.0 for the first adult and 0.5 for each additional adult in the household (aged 15+) and a weight of 0.3 for each child (aged 0-14). The subsistence level is based on figures of the report "Bestaansminimum 2010" and is monthly updated for inflation using the monthly CPI. The reference unit used in this report is a household consisting of two (2) adults and two (2) children (aged 0-14).

In May 2026 the monthly subsistence level for a household consisted of two (2) adults and two (2) children (aged 0-14) (Afl. 5,641) showed an increase of Afl. 131 compared to May 2025 (Afl. 5,510) and was mainly caused by increases of Afl. 80 and Afl. 27 in the sectors "Food and non-alcoholic beverages" and "Transport". The largest decrease in May 2026 was registered in the sector "Household operation" (Afl. -11).

Table 1 Monthly subsistence level in Aruba (in Afl.) by sector for a family of 2 adults and 2 children (aged 0-14)

May 2025 vs May 2026

Sector	May-25	May-26	Absolute Change
Food and non-alcoholic beverages	2,303	2,383	80
Clothing and footwear	242	242	0
Housing	1,659	1,677	18
Household operation	116	105	-11
Health	88	85	-3
Transport	323	350	27
Communications	175	186	11
Recreation and culture	155	156	1
Education	97	99	2
Miscellaneous goods and services	351	359	8
Total	5,510	5,641	131

Source: Central Bureau of Statistics Aruba

Table 2 Monthly Subsistence level in Aruba (in Afl.) by family size and composition, (Base period Oct. 2010) for the period:

May 2025 - May 2026

Period	Equivalence scale				
	1	1.3	1.5	1.8	2.1
	1 adult	1 adult + 1 child	2 adults	2 adults + 1 child	2 adults + 2 children
May-25	2,624	3,411	3,935	4,723	5,510
Jun-25	2,624	3,411	3,935	4,722	5,509
Jul-25	2,617	3,403	3,926	4,711	5,496
Aug-25	2,628	3,417	3,942	4,731	5,519
Sep-25	2,629	3,418	3,944	4,732	5,521
Oct-25	2,630	3,419	3,945	4,734	5,523
Nov-25	2,628	3,417	3,942	4,731	5,519
Dec-25	2,636	3,427	3,955	4,746	5,537
Jan-26	2,633	3,423	3,949	4,739	5,529
Feb-26	2,643	3,436	3,965	4,758	5,551
Mar-26	2,668	3,468	4,002	4,802	5,602
Apr-26	2,661	3,459	3,991	4,790	5,588
May-26	2,686	3,492	4,029	4,835	5,641

Source: Central Bureau of Statistics Aruba

In May 2026, the monthly subsistence level for a single adult household is Afl. 2,686, which represents an income deficit of Afl. 679, an increase of Afl. 41 compared to the deficit observed one year ago (Afl. 638). This deficit is the highest registered over a period of six (6) years for the month of May.

For clarification, we have added two columns to Table 3: (1) the income supplement ("reparatietoelag"), which provides additional support to eligible workers; and (2) the estimated income deficit, which is reduced by this supplement, thereby improving the financial position of minimum-wage earners. The current approach will be maintained to ensure consistency and comparability.

Table 3 Monthly income surplus/deficit (in Afl.) for a single adult household

May, 2021 - 2026

Period	Minimum wage		Income supplement ⁽¹⁾	Surplus/deficit ⁽²⁾	
	1 adult	Surplus/deficit		Surplus/deficit	Surplus/deficit
2021	2,263	1,815	-448	125	-323
2022	2,403	1,815	-588	125	-463
2023	2,550	1,893	-657	125	-532
2024	2,615	1,986	-629	125	-504
2025	2,624	1,986	-638	175	-463
2026	2,686	2,007	-679	175	-504

Source: Central Bureau of Statistics Aruba

L.G. Smith Boulevard 160 | Oranjestad, Aruba | Tel: +297 5247433 | www.cbs.aw | 25 June 2026

- Figures have been rounded for clarity. Minor discrepancies may exist between individual values and their aggregated totals. These differences do not affect the overall accuracy or integrity of the data.
- Certain product groups are subject to frequent changes in models, quality, or specifications, which limits strict item-to-item price comparability over time. Product replacement is therefore applied in line with internationally accepted CPI methodology to maintain representativity and relevance. For a more detailed explanation, reference is made to the ACPI Methodology Statement on our website (www.cbs.aw).

Table 4 Overview of the percentage changes of the CPI and the subsistence level, May 2025 - May 2026 (Jun 2019=100)

	May-25	Jun-25	Jul-25	Aug-25	Sep-25	Oct-25	Nov-25	Dec-25	Jan-26	Feb-26	Mar-26	Apr-26	May-26
Index CPI													
CPI (Monthly)	109.57	109.39	109.12	109.14	109.17	109.12	109.03	109.47	109.19	109.89	110.70	110.78	111.90
CPI (12-month average)	109.31	109.37	109.36	109.29	109.26	109.25	109.23	109.27	109.31	109.38	109.48	109.55	109.74
Percentage changes													
Monthly	-0.3	-0.2	-0.2	0.0	0.0	0.0	-0.1	0.4	-0.3	0.6	0.7	0.1	1.0
Year-to-date	0.5	0.3	0.0	0.1	0.1	0.0	0.0	0.4	-0.3	0.4	1.1	1.2	2.2
End of period	0.1	0.6	-0.1	-0.8	-0.4	-0.1	-0.2	0.4	0.5	0.7	1.1	0.8	2.1
Period average	1.1	0.9	0.7	0.4	0.2	0.2	0.1	0.1	0.1	0.1	0.2	0.2	0.4
Index Goods													
Goods (Monthly)	109.17	109.08	108.45	108.60	108.39	108.32	108.20	108.06	107.93	108.47	109.36	109.86	111.44
Goods (12-month average)	109.07	109.12	109.10	108.94	108.81	108.73	108.68	108.65	108.66	108.64	108.67	108.66	108.85
Percentage changes													
Monthly	-0.7	-0.1	-0.6	0.1	-0.2	-0.1	-0.1	-0.1	-0.1	0.5	0.8	0.4	1.4
Year-to-date	0.8	0.7	0.1	0.2	0.0	0.0	-0.1	-0.3	-0.1	0.4	1.2	1.7	3.1
End of period	-0.5	0.5	-0.3	-1.7	-1.4	-0.9	-0.6	-0.3	0.0	-0.2	0.3	-0.1	2.1
Period average	0.7	0.8	0.5	0.1	-0.1	-0.2	-0.3	-0.3	-0.3	-0.4	-0.4	-0.4	-0.2
Index Services													
Services (Monthly)	110.13	109.82	110.06	109.90	110.25	110.23	110.18	111.43	110.96	111.86	112.57	112.07	112.54
Services (12-month average)	109.65	109.71	109.73	109.78	109.88	109.98	110.00	110.12	110.22	110.40	110.61	110.79	110.99
Percentage changes													
Monthly	0.2	-0.3	0.2	-0.1	0.3	0.0	0.0	1.1	-0.4	0.8	0.6	-0.4	0.4
Year-to-date	0.1	-0.2	0.0	-0.2	0.2	0.1	0.1	1.2	-0.4	0.4	1.0	0.6	1.0
End of period	1.0	0.7	0.2	0.5	1.1	1.0	0.3	1.2	1.1	2.0	2.2	2.0	2.2
Period average	1.6	1.2	0.9	0.7	0.7	0.7	0.6	0.7	0.7	0.8	1.0	1.1	1.2
Indices CPI, Energy & Food													
CPI (12-month average)	108.12	108.31	108.40	108.40	108.44	108.49	108.50	108.57	108.67	108.80	108.95	108.98	109.09
Energy (12-month average)	110.01	109.49	109.07	108.59	108.17	107.94	107.73	107.60	107.34	107.03	106.83	106.95	107.43
Food (12-month average)	117.26	117.29	117.29	117.32	117.34	117.35	117.38	117.41	117.56	117.77	118.03	118.35	118.67
Percentage changes													
CPI (Period average)	2.0	1.9	1.7	1.4	1.2	1.0	0.9	1.0	1.0	1.0	1.1	0.9	0.9
Energy (Period average)	-3.0	-3.5	-3.8	-4.2	-4.2	-4.0	-3.9	-3.8	-3.9	-4.0	-3.9	-3.4	-2.3
Food (Period average)	1.6	1.4	1.2	1.0	0.8	0.7	0.5	0.3	0.4	0.5	0.7	0.9	1.2
Subsistence level (Monthly) in Afl													
1 adult	2,624	2,624	2,617	2,628	2,629	2,630	2,628	2,636	2,633	2,643	2,668	2,661	2,686
2 adults + 2 children	5,510	5,509	5,496	5,519	5,521	5,523	5,519	5,537	5,529	5,551	5,602	5,588	5,641
Changes in Afl													
1 adult (Monthly)	-1	0	-7	11	1	1	-2	8	-3	10	25	-7	25
1 adult (Yearly)	9	18	-2	2	-2	1	3	12	24	27	46	36	62
2 adults + 2 children (Monthly)	-3	-1	-13	23	2	2	-4	18	-8	22	51	-14	53
2 adults + 2 children (Yearly)	18	36	-3	5	-5	3	7	26	49	57	95	75	131

Source: Central Bureau of Statistics Aruba

Table 5 Percentage change by sector

May 2026	Weight coefficient	Effect Apr 26 - May 26	Percentage changes (%)			
			Monthly Apr 26 - May 26	Year-to-date Dec 25 - May 26	End of period May 25 - May 26	Period average May 24/25 - May 25/26
Sector						
CPI	10,000.0	1.01	1.0	2.2	2.1	0.4
01. Food and non-alcoholic beverages	1,087.7	0.03	0.3	1.8	3.4	1.5
02. Alcoholic beverages and tobacco	78.2	0.00	-0.3	0.3	0.8	0.9
03. Clothing and footwear	276.8	0.25	12.9	5.1	-0.3	-4.4
04. Housing	2,522.2	0.06	0.2	0.8	1.1	0.9
05. Household operation	929.2	-0.25	-3.1	-4.8	-9.2	-3.7
06. Health	223.1	0.03	1.5	3.3	-3.1	-1.6
07. Transport	1,257.4	0.44	3.3	7.3	8.4	-0.5
08. Communications	849.6	0.25	2.7	6.4	5.9	2.7
09. Recreation and culture	1,013.3	0.03	0.3	2.0	0.5	-1.7
10. Education	98.0	0.00	0.0	0.0	2.2	2.0
11. Restaurants and hotels	442.0	0.16	3.0	4.9	7.4	5.3
12. Miscellaneous goods and services	1,222.6	0.01	0.1	0.7	2.3	1.1

Source: Central Bureau of Statistics Aruba

Table 6 Categories with the greatest positive effect on the CPI

May 2026	Monthly change	Effect
Category		
Operation of personal transport equipment	4.2	0.35
Telephone and telefax equipment	29.3	0.25
Clothing	13.6	0.21
Accommodation services	39.8	0.11
Purchase of vehicles	2.5	0.11

Source: Central Bureau of Statistics Aruba

Table 7 Categories with the greatest negative effect on the CPI

May 2026	Monthly change	Effect
Category		
Household appliances	-7.1	-0.13
Tools and equipment for house and garden	-8.7	-0.07
Furniture, furnishings, carpets and other floor coverings	-5.6	-0.04
Holidays	-1.8	-0.04

Source: Central Bureau of Statistics Aruba

L.G. Smith Boulevard 160 | Oranjestad, Aruba | Tel: +297 5247433 | www.cbs.aw | 25 June 2026

- Figures have been rounded for clarity. Minor discrepancies may exist between individual values and their aggregated totals. These differences do not affect the overall accuracy or integrity of the data.
- Certain product groups are subject to frequent changes in models, quality, or specifications, which limits strict item-to-item price comparability over time. Product replacement is therefore applied in line with internationally accepted CPI methodology to maintain representativity and relevance. For a more detailed explanation, reference is made to the ACPI Methodology Statement on our website (www.cbs.aw).

Change in prices of crude oil, utilities, gasoline and diesel in May 2026

The prices of utilities (electricity and water), gasoline and diesel are for the greater part determined by international crude oil prices. In May 2026 the average price per barrel of crude oil (US\$ 102.34) had an increase of US\$ 2.47 (2.5%) compared to April 2026 (US\$ 99.87).

The prices of electricity and water did not change compared to April 2026. Subsequently, the average electricity price per household remained at Afl. 263.67, while the average price of water per household remained at Afl. 168.73.

In May 2026 the price of gasoline registered an increase of Afl. 17.20 cents (6.9%) and had an effect of 0.32 ppts on the CPI. The price of diesel registered an increase of Afl. 10.50 cents (4.3%) and had an effect of 0.02 ppts for the CPI of May 2026.

In May 2026, utilities, gasoline and diesel as a group, showed an increase in price of 2.1% compared to April 2026, and had an effect of 0.33 ppts on the CPI, while the remaining 404 goods and services, as a group, show an increase of 0.8% and had an effect of 0.68 ppts on the CPI.

Table 9 Effect on the CPI of goods and services which are dependent on crude oil prices

Category	Weight	Monthly		Yearly	
		Apr-25 vs May-26	Effect	May-25 vs May-26	Effect
May 2026					
Electricity	810.2	0.0	0.00	0.0	0.00
Gasoline	430.5	6.9	0.32	18.1	0.76
Water	367.3	0.0	0.00	0.0	0.00
Diesel	30.2	4.3	0.02	36.7	0.10
Total group	1,638.1	2.1	0.33	5.4	0.87
Remaining goods and services	8,361.9	0.8	0.68	1.5	1.25
CPI	10,000.0	1.0	1.01	2.1	2.12

Source: Central Bureau of Statistics Aruba

Table 8 Prices of crude oil, utilities, gasoline and diesel, 2025 - 2026

Month	2025							2026						
	Crude oil	Total energy charge		Electricity	Water	Gasoline	Diesel	Crude oil	Total energy charge		Electricity	Water	Gasoline	Diesel
		≤ 500 kWh	501-1000 kWh						≤ 500 kWh	501-1000 kWh				
January	75.32	34.31	35.31	263.67	168.73	233.50	204.90	59.66	34.31	35.31	263.67	168.73	210.70	188.50
February	71.56	34.31	35.31	263.67	168.73	241.70	218.20	64.55	34.31	35.31	263.67	168.73	213.60	192.90
March	68.06	34.31	35.31	263.67	168.73	241.00	216.10	90.15	34.31	35.31	263.67	168.73	223.40	201.40
April	64.22	34.31	35.31	263.67	168.73	239.90	206.20	99.87	34.31	35.31	263.67	168.73	248.00	246.50
May	62.08	34.31	35.31	263.67	168.73	224.50	188.00	102.34	34.31	35.31	263.67	168.73	265.20	257.00
June	68.60	34.31	35.31	263.67	168.73	226.70	185.60							
July	67.94	34.31	35.31	263.67	168.73	229.00	196.70							
August	65.67	34.31	35.31	263.67	168.73	228.90	204.60							
September	63.99	34.31	35.31	263.67	168.73	228.90	196.40							
October	61.04	34.31	35.31	263.67	168.73	228.70	200.00							
November	60.00	34.31	35.31	263.67	168.73	219.20	195.60							
December	58.02	34.31	35.31	263.67	168.73	221.20	204.10							
Yearly Average	65.54	34.31	35.31	263.67	168.73	230.27	201.37	83.31	34.31	35.31	263.67	168.73	232.18	217.26

Source: Central Bureau of Statistics Aruba

¹ Average West Texas Intermediate (WTI) crude oil price per barrel in US\$ (Source: U.S. Energy Information Administration)

² Total energy charge in Afl. cents per kWh

³ Electricity price in Afl. is based on an average household usage of 725.5 kWh

⁴ Water price in Afl. is based on an average household usage in m³

⁵ Gasoline and diesel prices in Afl. cents per liter

L.G. Smith Boulevard 160 | Oranjestad, Aruba | Tel: +297 5247433 | www.cbs.aw | 25 June 2026

- Figures have been rounded for clarity. Minor discrepancies may exist between individual values and their aggregated totals. These differences do not affect the overall accuracy or integrity of the data.
- Certain product groups are subject to frequent changes in models, quality, or specifications, which limits strict item-to-item price comparability over time. Product replacement is therefore applied in line with internationally accepted CPI methodology to maintain representativity and relevance. For a more detailed explanation, reference is made to the ACPI Methodology Statement on our website (www.cbs.aw).

Change in prices of Food & Catering Services in May 2026

The “Food & catering services” index showed an increase of 0.5% in May 2026, after having increased 0.3% in April 2026. The index for “Food at home” showed an increase of 0.3% in May, as seven (7) of the eleven (11) “Food at home” indices increased in May 2026. The “Vegetables” index registered the largest increase (2.8%) in May 2026. Furthermore, other significant increases were posted in the indices for “Fruit” (2.5%), “Fish and other seafood” (1.4%) and “Sugar, jam, honey and other confectionery” (1.2%). The largest decrease in May 2026 was registered for the index of “Potatoes and other tubers” (-4.3%).

The index for “Food away from home” shows an increase of 0.9% in May 2026.

In May 2026, “Food at home” and “Food away from home” as a group showed an increase in price of 0.5% compared to April 2026 and had an effect of 0.08 pts on the CPI, while the remaining goods and services, as a group, experienced an increase in price of 1.1%, causing an effect of 0.93 pts on the CPI.

Table 11 Effect on the CPI of Food at home and Food away from home
May 2026

Category	Weight	Monthly		Yearly	
		Apr-25 vs May-26	Change %	May-25 vs May-26	Effect
Food at home	1,087.7	0.3	0.03	3.4	0.40
Food away from home	429.8	0.9	0.05	4.4	0.22
Total group	1,517.5	0.5	0.08	3.7	0.62
Remaining goods and services	8,482.5	1.1	0.93	1.8	1.50
CPI	10,000.0	1.0	1.01	2.1	2.12

Source: Central Bureau of Statistics Aruba

Table 10 Percentage change for Food & catering services

May 2026	Weight coefficient	Indices			Percentage changes			Effect	
		May-25	Apr-26	May-26	Monthly	Monthly	End of period	Monthly	End of period
		Mar 26 - Apr 26	Apr 26 - May 26	May 25 - May 26	Apr 26 - May 26	May 25 - May 26	Apr 26 - May 26	May 25 - May 26	
Food & catering services	1,517.5	120.10	123.98	124.57	0.3	0.5	3.7	0.081	0.619
Food at home	1,087.7	117.96	121.67	122.02	0.3	0.3	3.4	0.034	0.403
Bread and cereals	178.1	122.46	126.31	126.04	0.4	-0.2	2.9	-0.004	0.058
Meat	242.5	119.71	123.33	122.98	0.4	-0.3	2.7	-0.008	0.072
Fish and other seafood	49.0	109.51	106.46	107.91	0.7	1.4	-1.5	0.006	-0.007
Milk, cheese and eggs	135.3	125.83	127.36	125.98	0.5	-1.1	0.1	-0.017	0.002
Oils and fats	32.2	126.81	130.47	131.01	0.1	0.4	3.3	0.002	0.012
Fruit	97.6	103.94	108.08	110.77	0.9	2.5	6.6	0.024	0.061
Potatoes and other tubers	18.2	93.73	89.01	85.22	2.4	-4.3	-9.1	-0.006	-0.014
Vegetables	89.1	90.40	97.88	100.64	-0.6	2.8	11.3	0.022	0.083
Sugar, jam, honey and other confectionery	42.0	129.27	138.14	139.74	0.7	1.2	8.1	0.006	0.040
Food products n.e.c.	80.1	124.50	128.62	129.50	0.0	0.7	4.0	0.006	0.037
Non-alcoholic beverages	123.6	126.88	131.86	132.11	-0.1	0.2	4.1	0.003	0.059
Food away from home	429.8	125.52	129.82	131.03	0.1	0.9	4.4	0.047	0.216
Other goods and services	8,482.5	107.69	108.42	109.63	0.0	1.1	1.8	0.929	1.501
Other goods	4,735.8	107.16	107.14	109.01	0.5	1.7	1.7	0.798	0.800
Other services	3,746.7	108.37	110.03	110.42	-0.5	0.4	1.9	0.131	0.701
CPI	10,000.0	109.57	110.78	111.90	0.1	1.0	2.1	1.010	2.120

Source: Central Bureau of Statistics Aruba

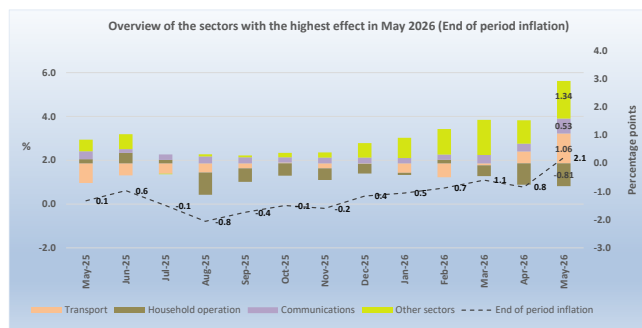
L.G. Smith Boulevard 160 | Oranjestad, Aruba | Tel: +297 5247433 | www.cbs.aw | 25 June 2026

- Figures have been rounded for clarity. Minor discrepancies may exist between individual values and their aggregated totals. These differences do not affect the overall accuracy or integrity of the data.
- Certain product groups are subject to frequent changes in models, quality, or specifications, which limits strict item-to-item price comparability over time. Product replacement is therefore applied in line with internationally accepted CPI methodology to maintain representativity and relevance. For a more detailed explanation, reference is made to the ACPI Methodology Statement on our website (www.cbs.aw).

CPI for the period May 2025 – May 2026

Consumer Price Index

Over the last 12 months, the CPI increased by 2.1%. Nine (9) of the twelve (12) sectors registered increases in prices. The increases that had the greatest influence on the CPI were registered for the “Transport” (8.4%), “Communications” (5.9%), “Food and non-alcoholic beverages” (3.4%), “Restaurants and hotels” (7.4%) and “Housing” (1.1%) sectors, which contributed with an effect of respectively, 1.06, 0.53, 0.40, 0.38 and 0.28 ppts. The increases in the remaining sectors had an effect of 0.34 ppts for the CPI of May 2025 - May 2026.



Aforementioned increases were partially offset mainly by a decrease in the index for the “Household operation” (-9.2%) sector, causing an effect of -0.81 ppts for the CPI of May 2025 - May 2026. The decreases in the remaining sectors had an effect of -0.07 ppts for the CPI of May 2025 - May 2026.

The increase in the “Transport” sector was mainly due to an increase of 12.5% in the category “Operation of personal transport equipment”, which contributed to an effect of 0.97 ppts. The increase in the “Communications” sector was due to an increase in the category “Telephone and telefax equipment” (91.1%), which contributed to an effect of 0.53 ppts. The increase in the “Food and non-alcoholic beverages” sector was mainly due to an increase of 3.3% in the category “Food”, which contributed to an effect of 0.34 ppts. The increase in the “Restaurants and hotels” sector was due to increases in the categories “Catering services” (4.4%) and “Accommodation services” (72.9%), which contributed to an effect of respectively, 0.22 and 0.16 ppts. The increase in the “Housing” sector was mainly due to increases in the categories “Maintenance and repair of the dwelling” (3.1%) and “Actual rentals for housing” (1.5%), which contributed to an effect of respectively, 0.18 and 0.10 ppts.

The decrease in the “Household operation” sector was mainly due to a decrease of 23.8% in the category “Household appliances”, which contributed to an effect of -0.54 ppts.

Consumption basket

Over the last year 55.4% of the products in the consumption basket experienced an increase in price, causing an effect of 3.83 ppts, while 32.6% showed a decrease, contributing to an effect of -1.71 ppts and the remaining 12.0% had no change in price. The prices of goods (2.1%) and services (2.2%) showed increases and caused an influence of respectively, 1.20 and 0.92 ppts.

Subsistence level

Over the last 12 months, the subsistence level for a household consisting of two (2) adults and two (2) children (aged 0-14) registered an increase of Afl. 131, from Afl. 5,510 in May 2025 to Afl. 5,641, in May 2026. This increase was mainly due to increases in the “Food and non-alcoholic beverages” (Afl. 80) and “Transport” (Afl. 27) sectors.

Change in prices of crude oil, utilities, gasoline and diesel

The average price per barrel of crude oil registered an increase of US\$ 40.26 (64.9%) from US\$ 62.08 in May 2025 to US\$ 102.34 in May 2026.

The energy index increased by 5.4% over the past 12 months and had an influence of 0.87 ppts. The indices of “Gasoline” (18.1%) and “Diesel” (36.7%) registered increases over the last year, contributing with an effect of respectively, 0.76 and 0.10 ppts on the yearly CPI. The indices of “Electricity” and “Water” did not register any changes had no effect on the CPI over this period, while the remaining 404 goods and services, as a group, show an increase of 1.5% and had an effect of 1.25 ppts on the CPI.

Change in prices of Food & Catering Services

Over the last 12 months, the “Food & catering services” increased by 3.7%. The “Food at home” index showed an increase of 3.4%, where nine (9) of the “Food at home” food groups increased over this period.

The “Vegetables” index increased by 11.3%, the largest increase among the “Food at home” food groups. Furthermore, other significant increases were posted in the indices for “Sugar, jam, honey and other confectionery” (8.1%), “Fruit” (6.6%), “Non-alcoholic beverages” (4.1%), “Food products n.e.c.” (4.0%) and “Oils and fats” (3.3%). The largest decrease during this period was registered in the index for “Potatoes and other tubers” (-9.1%).

The index for “Food away from home” increased by 4.4% over the last 12 months.

Over the last 12 months, “Food at home” and “Food away from home” as a group showed an increase in price of 3.7% and had an effect of 0.62 ppts on the CPI, while the remaining goods and services, as a group, experienced an increase in price of 1.8%, causing an effect of 1.50 ppts on the CPI.

L.G. Smith Boulevard 160 | Oranjestad, Aruba | Tel: +297 5247433 | www.cbs.aw | 25 June 2026

- Figures have been rounded for clarity. Minor discrepancies may exist between individual values and their aggregated totals. These differences do not affect the overall accuracy or integrity of the data.
- Certain product groups are subject to frequent changes in models, quality, or specifications, which limits strict item-to-item price comparability over time. Product replacement is therefore applied in line with internationally accepted CPI methodology to maintain representativity and relevance. For a more detailed explanation, reference is made to the ACPI Methodology Statement on our website (www.cbs.aw).

APPENDIX 1

Monthly & Yearly Changes (%) in the Consumer Price Index, Total Population (Jun 2019 = 100)
May 2026

DESCRIPTION	WEIGHT coefficient	2025	2025	2026	2026	May-25	May-26	Monthly Average Apr 26 - May 26	Ytd Dec 25 - May 26	End of period May 25 - May 26	Period average May 24/25 - May 25/26
		May	Dec	Apr	May	Average 12 months	Average 12 months				
Food and non-alcoholic beverages	1,087.7	117.96	119.88	121.67	122.02	118.08	119.91	0.3	1.8	3.4	1.5
Food	964.1	116.81	118.70	120.37	120.73	117.26	118.67	0.3	1.7	3.3	1.2
Non-alcoholic beverages	123.6	126.88	129.08	131.86	132.11	124.47	129.56	0.2	2.3	4.1	4.1
Alcoholic beverages and tobacco	78.2	111.20	111.71	112.46	112.08	110.72	111.76	-0.3	0.3	0.8	0.9
Alcoholic beverages for consumption at home	62.2	108.41	108.87	109.19	108.69	108.36	108.75	-0.5	-0.2	0.3	0.4
Tobacco	16.0	122.05	122.70	125.16	125.26	119.86	123.44	0.1	2.1	2.6	3.0
Clothing and footwear	276.8	88.83	84.24	78.40	88.54	88.70	84.76	12.9	5.1	-0.3	-4.4
Clothing	212.8	90.80	85.87	81.97	93.16	90.82	87.12	13.6	8.5	2.6	-4.1
Footwear	64.0	82.29	78.82	66.51	73.19	81.65	76.92	10.0	-7.1	-11.1	-5.8
Housing	2,522.2	112.31	112.64	113.26	113.54	111.73	112.72	0.2	0.8	1.1	0.9
Actual rentals for housing	666.7	109.20	110.15	110.70	110.84	108.46	110.08	0.1	0.6	1.5	1.5
Imputed rentals for housing	34.4	94.59	94.59	95.06	95.06	94.59	94.72	0.0	0.5	0.5	0.1
Maintenance and repair of the dwelling	517.0	124.92	125.29	127.60	128.78	122.64	125.75	0.9	2.8	3.1	2.5
Water supply and miscellaneous services relating to the dwelling	463.6	122.92	122.92	122.92	122.92	122.29	122.92	0.0	0.0	0.0	0.5
Electricity, gas and other fuels	840.4	101.89	101.89	101.89	101.89	102.50	101.89	0.0	0.0	0.0	-0.6
Household operation	929.2	103.70	98.89	97.20	94.17	103.54	99.74	-3.1	-4.8	-9.2	-3.7
Furniture, furnishings, carpets and other floor coverings	128.8	82.20	76.51	68.21	64.40	83.94	71.91	-5.6	-15.8	-21.7	-14.3
Household textiles	58.6	55.79	47.38	43.81	42.67	61.49	46.75	-2.6	-9.9	-23.5	-24.0
Household appliances	246.0	101.01	91.25	82.80	76.96	100.53	92.23	-7.1	-15.7	-23.8	-8.3
Glassware, tableware and household utensils	17.2	54.22	51.59	51.39	49.28	57.46	54.54	-4.1	-4.5	-9.1	-5.1
Tools and equipment for house and garden	58.2	153.53	136.55	164.00	149.75	141.37	155.40	-8.7	9.7	-2.5	9.9
Goods and services for routine household maintenance and cleaning	420.5	113.67	114.11	114.57	114.68	113.81	114.19	0.1	0.5	0.9	0.3
Health	223.1	106.64	100.06	101.86	103.34	104.28	102.58	1.4	3.3	-3.1	-1.6
Medical products, appliances and equipment	152.3	105.79	97.81	99.18	101.10	102.48	100.88	1.9	3.4	-4.4	-1.6
Out-patient services	52.4	108.38	105.06	107.58	108.69	108.96	106.44	1.0	3.5	0.3	-2.3
Other treatments	7.8	100.17	97.08	97.88	98.37	100.91	98.12	0.5	1.3	-1.8	-2.8
Health products and services n.e.c.	10.5	115.19	109.80	115.16	112.78	109.65	111.28	-2.1	2.7	-2.1	1.5
Transport	1,257.4	110.77	111.87	116.16	120.04	112.91	112.30	3.3	7.3	8.4	-0.5
Purchase of vehicles	442.6	111.70	110.53	109.83	112.54	109.60	110.70	2.5	1.8	0.8	1.0
Operation of personal transport equipment	763.3	111.50	112.62	120.34	125.43	116.60	114.00	4.2	11.4	12.5	-2.2
Transport services	51.5	91.98	112.26	108.58	104.53	86.74	100.78	-3.7	-6.9	13.6	16.2
Communications	849.6	114.96	114.41	118.54	121.77	112.63	115.69	2.7	6.4	5.9	2.7
Telephone and telefax equipment	43.8	145.03	134.25	214.41	277.16	100.07	159.20	29.3	106.5	91.1	59.1
Telephone and telefax services	805.8	113.33	113.33	113.33	113.33	113.31	113.33	0.0	0.0	0.0	0.0
Recreation and culture	1,013.3	93.04	91.66	93.19	93.50	93.65	92.02	0.3	2.0	0.5	-1.7
Audio-visual, photographic and information processing equipment	58.5	68.51	56.63	63.09	59.05	70.96	63.60	-6.4	4.3	-13.8	-10.4
Other major durables for recreation and culture	20.0	103.60	99.95	120.71	121.24	99.65	117.36	0.4	21.3	17.0	17.8
Other recreational items and equipment; gardens and pets	266.6	107.56	110.36	107.28	111.36	108.64	107.96	3.8	0.9	3.5	-0.6
Recreational and cultural services	309.1	106.04	106.21	106.33	106.39	103.55	106.32	0.1	0.2	0.3	2.7
Newspapers, books and stationery	43.7	86.70	83.94	76.32	72.90	79.58	78.20	-4.5	-13.2	-15.9	-1.7
Holidays	315.4	72.78	68.66	74.57	73.25	77.07	70.10	-1.8	6.7	0.6	-9.0
Education	98.0	131.23	134.11	134.11	134.11	131.23	133.87	0.0	0.0	2.2	2.0
Pre primary and primary education	24.0	142.86	154.62	154.62	154.62	142.86	153.64	0.0	0.0	8.2	7.5
Secondary education	43.4	145.73	145.73	145.73	145.73	145.73	145.73	0.0	0.0	0.0	0.0
Post-secondary non-tertiary education	4.6	100.00	100.00	100.00	100.00	100.00	100.00	0.0	0.0	0.0	0.0
Tertiary education	23.6	100.00	100.00	100.00	100.00	100.00	100.00	0.0	0.0	0.0	0.0
Education not definable by level	2.5	120.00	120.00	120.00	120.00	120.00	120.00	0.0	0.0	0.0	0.0
Restaurants and hotels	442.0	127.66	130.65	133.16	137.10	123.34	129.89	3.0	4.9	7.4	5.3
Catering services	429.8	125.52	128.43	129.82	131.03	123.98	128.27	0.9	2.0	4.4	3.5
Accommodation services	12.2	203.19	208.78	251.26	351.33	100.92	187.08	39.8	68.3	72.9	85.4
Miscellaneous goods and services	1,222.6	106.53	108.22	108.84	108.94	106.56	107.70	0.1	0.7	2.3	1.1
Personal care	427.1	105.22	107.31	108.84	108.89	105.61	107.06	0.0	1.5	3.5	1.4
Personal effects n.e.c.	106.6	126.83	137.86	138.82	139.80	125.62	132.92	0.7	1.4	10.2	5.8
Social protection	78.2	133.33	133.33	133.33	133.33	133.33	133.33	0.0	0.0	0.0	0.0
Insurance	610.7	100.46	100.46	100.46	100.46	100.46	100.46	0.0	0.0	0.0	0.0
CPI	10,000.0	109.57	109.47	110.78	111.90	109.31	109.74	1.0	2.2	2.1	0.4

Source: Central Bureau of Statistics Aruba

The Period average (last 24 months) change is calculated by comparing the average index for the most recent 12-month period compared with the average index of the preceding 12-month period.

L.G. Smith Boulevard 160 | Oranjestad, Aruba | Tel: +297 5247433 | www.cbs.aw | 25 June 2026

- Figures have been rounded for clarity. Minor discrepancies may exist between individual values and their aggregated totals. These differences do not affect the overall accuracy or integrity of the data.
- Certain product groups are subject to frequent changes in models, quality, or specifications, which limits strict item-to-item price comparability over time. Product replacement is therefore applied in line with internationally accepted CPI methodology to maintain representativity and relevance. For a more detailed explanation, reference is made to the ACPI Methodology Statement on our website (www.cbs.aw).



APPENDIX 2

Effect on the Consumer Price Index per sector and category, Total Population (Jun 2019 = 100)
May 2026

DESCRIPTION	WEIGHT coefficient	Monthly	Ytd	End of period	Period average
		Apr 26 - May 26	Dec 25 - May 26	May 25 - May 26 12 months	May 24/25 - May 25/26 24 months
Food and non-alcoholic beverages	1,087.7	0.03	0.21	0.40	0.18
Food	964.1	0.03	0.18	0.34	0.12
Non-alcoholic beverages	123.6	0.00	0.03	0.06	0.06
Alcoholic beverages and tobacco	78.2	0.00	0.00	0.01	0.01
Alcoholic beverages for consumption at home	62.2	0.00	0.00	0.00	0.00
Tobacco	16.0	0.00	0.00	0.00	0.01
Clothing and footwear	276.8	0.25	0.11	-0.01	-0.10
Clothing	212.8	0.21	0.14	0.05	-0.07
Footwear	64.0	0.04	-0.03	-0.05	-0.03
Housing	2,522.2	0.06	0.21	0.28	0.23
Actual rentals for housing	666.7	0.01	0.04	0.10	0.10
Imputed rentals for housing	34.4	0.00	0.00	0.00	0.00
Maintenance and repair of the dwelling	517.0	0.06	0.16	0.18	0.15
Water supply and miscellaneous services relating to the dwelling	463.6	0.00	0.00	0.00	0.03
Electricity, gas and other fuels	840.4	0.00	0.00	0.00	-0.05
Household operation	929.2	-0.25	-0.40	-0.81	-0.32
Furniture, furnishings, carpets and other floor coverings	128.8	-0.04	-0.14	-0.21	-0.14
Household textiles	58.6	-0.01	-0.03	-0.07	-0.08
Household appliances	246.0	-0.13	-0.32	-0.54	-0.19
Glassware, tableware and household utensils	17.2	0.00	0.00	-0.01	0.00
Tools and equipment for house and garden	58.2	-0.07	0.07	-0.02	0.07
Goods and services for routine household maintenance and cleaning	420.5	0.00	0.02	0.04	0.01
Health	223.1	0.03	0.07	-0.07	-0.03
Medical products, appliances and equipment	152.3	0.03	0.05	-0.07	-0.02
Out-patient services	52.4	0.01	0.02	0.00	-0.01
Other treatments	7.8	0.00	0.00	0.00	0.00
Health products and services n.e.c.	10.5	0.00	0.00	0.00	0.00
Transport	1,257.4	0.44	0.94	1.06	-0.07
Purchase of vehicles	442.6	0.11	0.08	0.03	0.04
Operation of personal transport equipment	763.3	0.35	0.89	0.97	-0.18
Transport services	51.5	-0.02	-0.04	0.06	0.07
Communications	849.6	0.25	0.57	0.53	0.24
Telephone and telefax equipment	43.8	0.25	0.57	0.53	0.24
Telephone and telefax services	805.8	0.00	0.00	0.00	0.00
Recreation and culture	1,013.3	0.03	0.17	0.04	-0.15
Audio-visual, photographic and information processing equipment	58.5	-0.02	0.01	-0.05	-0.04
Other major durables for recreation and culture	20.0	0.00	0.04	0.03	0.03
Other recreational items and equipment; gardens and pets	266.6	0.10	0.02	0.09	-0.02
Recreational and cultural services	309.1	0.00	0.01	0.01	0.08
Newspapers, books and stationery	43.7	-0.01	-0.04	-0.06	-0.01
Holidays	315.4	-0.04	0.13	0.01	-0.20
Education	98.0	0.00	0.00	0.03	0.02
Pre primary and primary education	24.0	0.00	0.00	0.03	0.02
Secondary education	43.4	0.00	0.00	0.00	0.00
Post-secondary non-tertiary education	4.6	0.00	0.00	0.00	0.00
Tertiary education	23.6	0.00	0.00	0.00	0.00
Education not definable by level	2.5	0.00	0.00	0.00	0.00
Restaurants and hotels	442.0	0.16	0.26	0.38	0.26
Catering services	429.8	0.05	0.10	0.22	0.17
Accommodation services	12.2	0.11	0.16	0.16	0.10
Miscellaneous goods and services	1,222.6	0.01	0.08	0.27	0.13
Personal care	427.1	0.00	0.06	0.14	0.06
Personal effects n.e.c.	106.6	0.01	0.02	0.13	0.07
Social protection	78.2	0.00	0.00	0.00	0.00
Insurance	610.7	0.00	0.00	0.00	0.00
CPI	10,000.0	1.01	2.22	2.12	0.39

Source: Central Bureau of Statistics Aruba

L.G. Smith Boulevard 160 | Oranjestad, Aruba | Tel: +297 5247433 | www.cbs.aw | 25 June 2026

- Figures have been rounded for clarity. Minor discrepancies may exist between individual values and their aggregated totals. These differences do not affect the overall accuracy or integrity of the data.
- Certain product groups are subject to frequent changes in models, quality, or specifications, which limits strict item-to-item price comparability over time. Product replacement is therefore applied in line with internationally accepted CPI methodology to maintain representativity and relevance. For a more detailed explanation, reference is made to the ACPI Methodology Statement on our website (www.cbs.aw).

APPENDIX 3

Monthly & Yearly Changes (%) and effect in the Food & catering services, Total Population (Jun 2019 = 100)
May 2026

DESCRIPTION	Weight coefficient	% Change		Effect	
		Monthly	End of period	Monthly	End of period
		Apr 26 - May 26	May 25 - May 26 12 months	Apr 26 - May 26	May 25 - May 26 12 months
Food & catering services	1,517.5	0.5	3.7	0.081	0.619
Food at home	1,087.7	0.3	3.4	0.034	0.403
Bread and cereals	178.1	-0.2	2.9	-0.004	0.058
Rice	23.5	0.1	0.3	0.000	0.001
Bread	72.1	-0.2	5.4	-0.002	0.043
Pasta products	9.2	-0.4	0.9	0.000	0.001
Other cereals and cereal products	73.3	-0.3	1.7	-0.003	0.014
Meat	242.5	-0.3	2.7	-0.008	0.072
Bovine	67.3	1.1	8.5	0.009	0.063
Swine	25.5	-0.4	3.2	-0.001	0.008
Poultry	75.7	-1.6	-4.2	-0.013	-0.036
Other meat and meat preparations	74.0	-0.3	4.6	-0.003	0.037
Fish and other seafood	49.0	1.4	-1.5	0.006	-0.007
Fish and seafood preparations	49.0	1.4	-1.5	0.006	-0.007
Milk, cheese and eggs	135.3	-1.1	0.1	-0.017	0.002
Cheese	55.4	0.0	4.5	0.000	0.028
Eggs	16.6	-7.5	-25.6	-0.015	-0.066
Milk	40.0	-0.1	7.7	0.000	0.034
Other milk products	23.3	-0.3	2.6	-0.001	0.006
Oils and fats	32.2	0.4	3.3	0.002	0.012
Corn oil	2.8	-0.8	1.1	0.000	0.000
Butter and margarine	9.2	0.5	4.1	0.000	0.004
Other oils and fats	20.1	0.6	3.3	0.001	0.008
Fruit	97.6	2.5	6.6	0.024	0.061
Oranges	9.4	0.9	9.8	0.001	0.012
Bananas and plantains	19.9	2.7	9.4	0.004	0.013
Apples	9.3	7.0	12.3	0.007	0.011
Avocado	5.0	-1.6	-17.1	-0.001	-0.008
Grapes	9.2	11.0	15.8	0.011	0.016
Nuts	11.9	0.2	2.1	0.000	0.002
Lemons and mandarins	6.0	1.4	5.3	0.001	0.002
Cherries and strawberries	8.8	0.2	4.4	0.000	0.005
Melons and watermelons	7.7	0.2	2.6	0.000	0.002
Papayas and pineapples	6.9	-0.2	2.0	0.000	0.001
Other fruits and fruit products	3.5	0.8	15.0	0.000	0.005
Potatoes and other tubers	18.2	-4.3	-9.1	-0.006	-0.014
Potatoes	12.2	-7.0	-14.1	-0.005	-0.012
Other tubers	2.0	-1.1	-3.5	0.000	-0.001
Sweet potatoes and yucca	4.0	-1.3	-3.0	-0.001	-0.001
Vegetables	89.1	2.8	11.3	0.022	0.083
Lettuce	6.8	58.2	51.5	0.009	0.009
Tomatoes	9.7	7.3	21.2	0.007	0.018
Onions and garlic	18.7	-1.5	7.8	-0.002	0.012
Celery and broccoli	15.3	7.1	30.5	0.009	0.034
Other vegetables	15.3	-1.0	2.1	-0.001	0.003
Other preserved or processed vegetables	8.4	0.6	5.9	0.001	0.005
Frozen vegetable mixtures	14.8	-0.4	1.8	-0.001	0.003
Sugar, jam, honey and other confectionery	42.0	1.2	8.1	0.006	0.040
Sugar	12.1	-0.4	4.7	-0.001	0.008
Jams and jellies	2.5	0.1	3.1	0.000	0.001
Other confectionery products	27.5	2.0	10.3	0.007	0.032
Food products n.e.c.	80.1	0.7	4.0	0.006	0.037
Other food products	80.1	0.7	4.0	0.006	0.037
Non-alcoholic beverages	123.6	0.2	4.1	0.003	0.059
Coffee and tea	20.9	0.1	10.0	0.000	0.025
Other non-alcoholic beverages	14.6	-0.1	2.6	0.000	0.004
Soft and sports drinks	31.0	0.1	1.1	0.000	0.004
Fruit juices	57.1	0.3	3.9	0.002	0.027
Food away from home	429.8	0.9	4.4	0.047	0.216
Food and beverage consumption away from home	429.8	0.9	4.4	0.047	0.216
Other goods and services	8,482.5	1.1	1.8	0.929	1.501
Other goods	4,735.8	1.7	1.7	0.798	0.800
Other services	3,746.7	0.4	1.9	0.131	0.701
CPI	10,000	1.0	2.1	1.010	2.120

Source: Central Bureau of Statistics Aruba

L.G. Smith Boulevard 160 | Oranjestad, Aruba | Tel: +297 5247433 | www.cbs.aw | 25 June 2026

- Figures have been rounded for clarity. Minor discrepancies may exist between individual values and their aggregated totals. These differences do not affect the overall accuracy or integrity of the data.
- Certain product groups are subject to frequent changes in models, quality, or specifications, which limits strict item-to-item price comparability over time. Product replacement is therefore applied in line with internationally accepted CPI methodology to maintain representativity and relevance. For a more detailed explanation, reference is made to the ACPI Methodology Statement on our website (www.cbs.aw).

APPENDIX 4

Overview of the Consumer Price Index (CPI), 2025 - 2026 (Jun 2019 = 100)

	Base						YEAR: 2026				YEAR: 2025			
	Base	Base	Base	Base	Base	Base	CHANGE				CHANGE			
	Jun-19	Jun-19	Jun-19	Jun-19	Jun-19	Jun-19	Monthly	Year-to date	Yearly	Period average	Monthly	Year-to date	Yearly	Period average
	=100.0	=100.0	=100.0	=100.0	=100.0	=100.0			12 months	24 months			12 months	24 months
	<u>Jan.'24</u>	<u>Dec.'23</u>	<u>Jan.'25</u>	<u>Dec.'24</u>	<u>Jan.'26</u>	<u>Dec.'25</u>								
Total Population	108.31	108.79	108.65	109.07	109.19	109.47	-0.3	-0.3	0.5	0.1	-0.4	-0.4	0.3	1.6
Low Income	109.03	109.37	109.40	109.69	110.30	110.31	0.0	0.0	0.8		-0.3	-0.3	0.3	
High Income	107.96	108.48	108.25	108.73	108.61	109.02	-0.4	-0.4	0.3		-0.4	-0.4	0.3	
	<u>Feb.'24</u>	<u>Jan.'24</u>	<u>Feb.'25</u>	<u>Jan.'25</u>	<u>Feb.'26</u>	<u>Jan.'26</u>								
Total Population	108.57	108.31	109.09	108.65	109.89	109.19	0.6	0.4	0.7	0.1	0.4	0.0	0.5	1.6
Low Income	109.29	109.03	109.74	109.40	110.82	110.30	0.5	0.5	1.0		0.3	0.0	0.4	
High Income	108.20	107.96	108.74	108.25	109.39	108.61	0.7	0.3	0.6		0.5	0.0	0.5	
	<u>Mar.'24</u>	<u>Feb.'24</u>	<u>Mar.'25</u>	<u>Feb.'25</u>	<u>Mar.'26</u>	<u>Feb.'26</u>								
Total Population	109.37	108.57	109.50	109.09	110.70	109.89	0.7	1.1	1.1	0.2	0.4	0.4	0.1	1.4
Low Income	109.97	109.29	110.11	109.74	111.40	110.82	0.5	1.0	1.2		0.3	0.4	0.1	
High Income	109.05	108.20	109.17	108.74	110.32	109.39	0.9	1.2	1.1		0.4	0.4	0.1	
	<u>Apr.'24</u>	<u>Mar.'24</u>	<u>Apr.'25</u>	<u>Mar.'25</u>	<u>Apr.'26</u>	<u>Mar.'26</u>								
Total Population	109.45	109.37	109.93	109.50	110.78	110.70	0.1	1.2	0.8	0.2	0.4	0.8	0.4	1.3
Low Income	109.87	109.97	110.70	110.11	111.56	111.40	0.2	1.1	0.8		0.5	0.9	0.8	
High Income	109.25	109.05	109.53	109.17	110.36	110.32	0.0	1.2	0.8		0.3	0.7	0.3	
	<u>May.'24</u>	<u>Apr.'24</u>	<u>May.'25</u>	<u>Apr.'25</u>	<u>May.'26</u>	<u>Apr.'26</u>								
Total Population	109.41	109.45	109.57	109.93	111.90	110.78	1.0	2.2	2.1	0.4	-0.3	0.5	0.1	1.1
Low Income	109.92	109.87	110.34	110.70	112.65	111.56	1.0	2.1	2.1		-0.3	0.6	0.4	
High Income	109.14	109.25	109.17	109.53	111.49	110.36	1.0	2.3	2.1		-0.3	0.4	0.0	
	<u>Jun.'24</u>	<u>May.'24</u>	<u>Jun.'25</u>	<u>May.'25</u>	<u>Jun.'26</u>	<u>May.'26</u>								
Total Population	108.72	109.41	109.39	109.57							-0.2	0.3	0.6	0.9
Low Income	109.39	109.92	110.14	110.34							-0.2	0.4	0.7	
High Income	108.37	109.14	108.99	109.17							-0.2	0.2	0.6	
	<u>Jul.'24</u>	<u>Jun.'24</u>	<u>Jul.'25</u>	<u>Jun.'25</u>	<u>Jul.'26</u>	<u>Jun.'26</u>								
Total Population	109.20	108.72	109.12	109.39							-0.2	0.0	-0.1	0.7
Low Income	109.80	109.39	109.89	110.14							-0.2	0.2	0.1	
High Income	108.87	108.37	108.71	108.99							-0.3	0.0	-0.1	
	<u>Aug.'24</u>	<u>Jul.'24</u>	<u>Aug.'25</u>	<u>Jul.'25</u>	<u>Aug.'26</u>	<u>Jul.'26</u>								
Total Population	110.01	109.20	109.14	109.12							0.0	0.1	-0.8	0.4
Low Income	110.50	109.80	109.83	109.89							-0.1	0.1	-0.6	
High Income	109.74	108.87	108.77	108.71							0.1	0.0	-0.9	
	<u>Sep.'24</u>	<u>Aug.'24</u>	<u>Sep.'25</u>	<u>Aug.'25</u>	<u>Sep.'26</u>	<u>Aug.'26</u>								
Total Population	109.58	110.01	109.17	109.14							0.0	0.1	-0.4	0.2
Low Income	110.18	110.50	110.02	109.83							0.2	0.3	-0.1	
High Income	109.26	109.74	108.71	108.77							-0.1	0.0	-0.5	
	<u>Oct.'24</u>	<u>Sep.'24</u>	<u>Oct.'25</u>	<u>Sep.'25</u>	<u>Oct.'26</u>	<u>Sep.'26</u>								
Total Population	109.19	109.58	109.12	109.17							0.0	0.0	-0.1	0.2
Low Income	109.94	110.18	109.92	110.02							-0.1	0.2	0.0	
High Income	108.79	109.26	108.68	108.71							0.0	0.0	-0.1	
	<u>Nov.'24</u>	<u>Oct.'24</u>	<u>Nov.'25</u>	<u>Oct.'25</u>	<u>Nov.'26</u>	<u>Oct.'26</u>								
Total Population	109.25	109.19	109.03	109.12							-0.1	0.0	-0.2	0.1
Low Income	109.72	109.94	109.94	109.92							0.0	0.2	0.2	
High Income	108.98	108.79	108.54	108.68							-0.1	-0.2	-0.4	
	<u>Dec.'24</u>	<u>Nov.'24</u>	<u>Dec.'25</u>	<u>Nov.'25</u>	<u>Dec.'26</u>	<u>Nov.'26</u>								
Total Population	109.07	109.25	109.47	109.03							0.4	0.4	0.4	0.1
Low Income	109.69	109.72	110.31	109.94							0.3	0.6	0.6	
High Income	108.73	108.98	109.02	108.54							0.4	0.3	0.3	

Source: Central Bureau of Statistics Aruba

L.G. Smith Boulevard 160 | Oranjestad, Aruba | Tel: +297 5247433 | www.cbs.aw | 25 June 2026

- Figures have been rounded for clarity. Minor discrepancies may exist between individual values and their aggregated totals. These differences do not affect the overall accuracy or integrity of the data.
- Certain product groups are subject to frequent changes in models, quality, or specifications, which limits strict item-to-item price comparability over time. Product replacement is therefore applied in line with internationally accepted CPI methodology to maintain representativity and relevance. For a more detailed explanation, reference is made to the ACPI Methodology Statement on our website (www.cbs.aw).



APPENDIX 5

Prices of crude oil, utilities and gasoline, 2001 - 2026

Month	Crude oil ¹	Electricity components					Water ⁵	Gasoline ⁶	Diesel ⁶
		Total energy charge ²			Fixed charge ³	Electricity ⁴			
		≤ 500 kWh	501 - 1000 kWh	> 1001 kWh					
Average 2001	26.01	24.59	22.09	22.09	0.00	172.79	89.40	128.34	90.10
Average 2002	26.06	24.89	22.39	22.39	0.00	174.91	90.82	127.20	88.68
Average 2003	34.49	27.02	24.52	24.52	0.00	190.38	99.21	139.21	100.18
Average 2004	41.31	27.18	24.68	24.68	0.00	191.57	100.02	152.51	113.05
Average 2005	56.36	31.10	28.60	28.60	0.00	219.97	113.69	167.74	136.04
Average 2006	66.12	35.91	33.41	33.41	0.00	254.88	128.70	176.22	149.77
Average 2007	72.08	36.59	34.09	34.09	0.00	259.84	133.59	200.43	168.38
Average 2008	99.87	45.67	43.17	43.17	0.00	325.67	161.80	228.19	214.48
Average 2009	61.46	37.33	34.83	34.83	0.00	265.17	139.60	175.15	142.53
Average 2010	79.22	43.92	41.42	41.42	0.00	312.98	159.21	193.43	163.22
Average 2011	94.74	47.58	47.57	47.57	0.00	345.14	177.47	229.48	203.46
Average 2012	94.25	47.68	51.21	53.46	0.00	353.85	171.13	235.53	210.07
Average 2013	98.00	41.10	44.90	58.40	0.00	306.75	137.05	229.48	205.83
Average 2014	93.49	42.58	45.32	57.77	0.63	315.71	137.05	224.24	200.21
Average 2015	48.71	47.02	46.56	55.87	2.50	342.59	137.05	179.74	147.80
Average 2016	43.17	40.40	41.80	47.64	12.50	308.76	137.05	165.87	131.12
Average 2017	50.85	34.52	35.72	45.93	12.50	265.65	137.05	180.79	147.69
Average 2018	65.08	34.52	35.72	45.93	12.50	265.65	137.05	204.95	177.59
Average 2019	56.84	34.52	35.72	45.93	12.50	265.65	137.05	202.67	176.53
Average 2020	39.25	31.09	31.99	42.09	12.50	240.09	137.05	177.93	143.26
Average 2021	67.78	31.09	31.99	42.09	12.50	240.09	137.05	223.34	183.27
Average 2022	95.14	34.19	35.18	46.29	12.50	262.78	150.17	275.90	263.17
Average 2023	77.67	36.71	37.78	49.70	12.50	281.24	168.73	260.17	235.78
Average 2024	76.57	36.46	37.52	49.36	12.50	272.76	168.73	249.57	218.03
January-25	75.32	34.31	35.31	46.45	12.50	263.67	168.73	233.50	204.90
February-25	71.56	34.31	35.31	46.45	12.50	263.67	168.73	241.70	218.20
March-25	68.06	34.31	35.31	46.45	12.50	263.67	168.73	241.00	216.10
April-25	64.22	34.31	35.31	46.45	12.50	263.67	168.73	239.90	206.20
May-25	62.08	34.31	35.31	46.45	12.50	263.67	168.73	224.50	188.00
June-25	68.60	34.31	35.31	46.45	12.50	263.67	168.73	226.70	185.60
July-25	67.94	34.31	35.31	46.45	12.50	263.67	168.73	229.00	196.70
August-25	65.67	34.31	35.31	46.45	12.50	263.67	168.73	228.90	204.60
September-25	63.99	34.31	35.31	46.45	12.50	263.67	168.73	228.90	196.40
October-25	61.04	34.31	35.31	46.45	12.50	263.67	168.73	228.70	200.00
November-25	60.00	34.31	35.31	46.45	12.50	263.67	168.73	219.20	195.60
December-25	58.02	34.31	35.31	46.45	12.50	263.67	168.73	221.20	204.10
Average 2025	65.54	34.31	35.31	46.45	12.50	263.67	168.73	230.27	201.37
January-26	59.66	34.31	35.31	46.45	12.50	263.67	168.73	210.70	188.50
February-26	64.55	34.31	35.31	46.45	12.50	263.67	168.73	213.60	192.90
March-26	90.15	34.31	35.31	46.45	12.50	263.67	168.73	223.40	201.40
April-26	99.87	34.31	35.31	46.45	12.50	263.67	168.73	248.00	246.50
May-26	102.34	34.31	35.31	46.45	12.50	263.67	168.73	265.20	257.00
Average 2026	83.31	34.31	35.31	46.45	12.50	263.67	168.73	232.18	217.26

Source: Central Bureau of Statistics Aruba

¹ Average West Texas Intermediate (WTI) crude oil price per barrel in US\$ (Source: U.S. Energy Information Administration)

² Total energy charge in Afl. cents per kWh

³ Fixed charge was introduced in October 2014 at Afl. 2.50

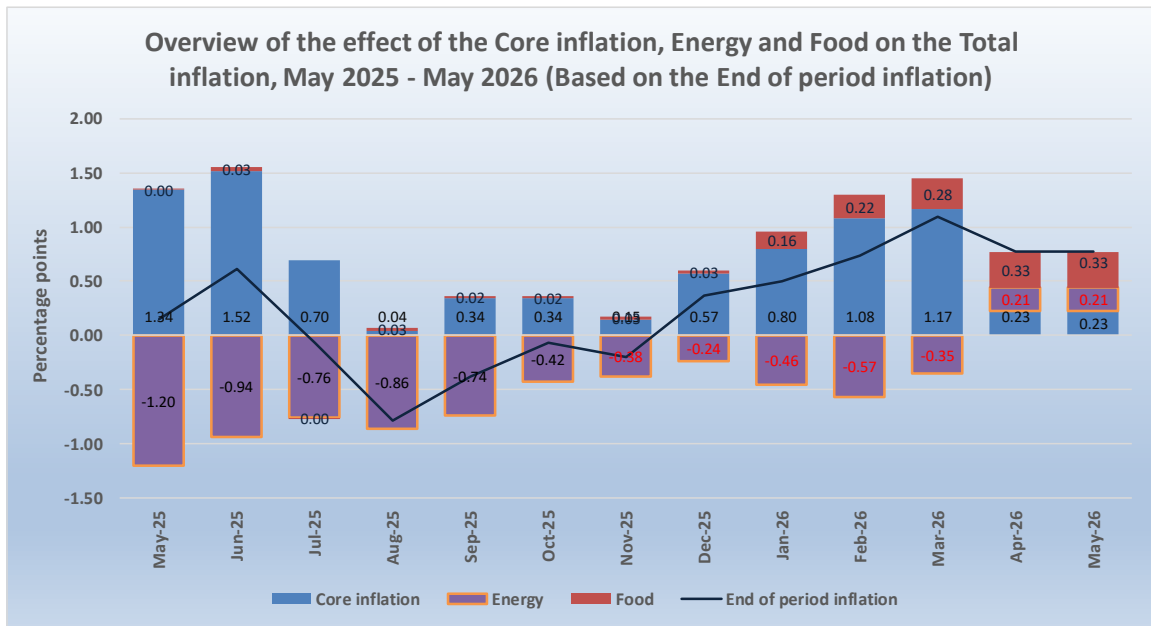
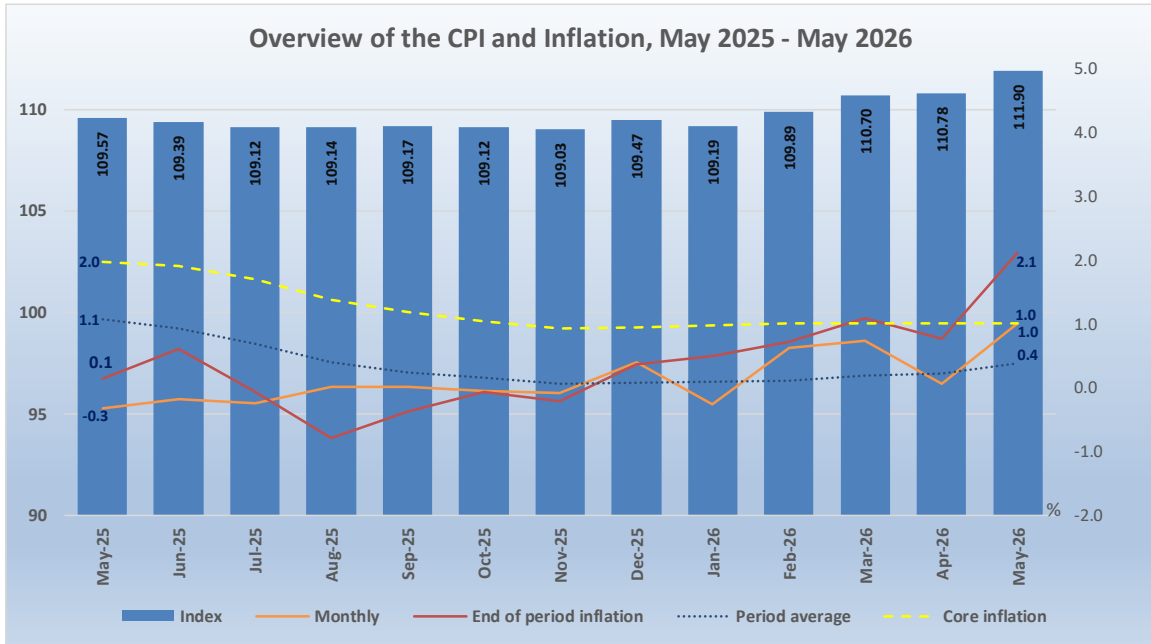
⁴ Electricity price in Afl. is based on an average household usage of 725.5 kWh

⁵ Water price in Afl. is based on an average household usage

⁶ Gasoline and diesel prices in Afl. cents per liter

- Figures have been rounded for clarity. Minor discrepancies may exist between individual values and their aggregated totals. These differences do not affect the overall accuracy or integrity of the data.
- Certain product groups are subject to frequent changes in models, quality, or specifications, which limits strict item-to-item price comparability over time. Product replacement is therefore applied in line with internationally accepted CPI methodology to maintain representativity and relevance. For a more detailed explanation, reference is made to the ACPI Methodology Statement on our website (www.cbs.aw).

APPENDIX 6



L.G. Smith Boulevard 160 | Oranjestad, Aruba | Tel: +297 5247433 | www.cbs.aw | 25 June 2026

- Figures have been rounded for clarity. Minor discrepancies may exist between individual values and their aggregated totals. These differences do not affect the overall accuracy or integrity of the data.
- Certain product groups are subject to frequent changes in models, quality, or specifications, which limits strict item-to-item price comparability over time. Product replacement is therefore applied in line with internationally accepted CPI methodology to maintain representativity and relevance. For a more detailed explanation, reference is made to the ACPI Methodology Statement on our website (www.cbs.aw).

